

DETAILED OBSERVATIONS

Walt Disney's Comics and Stories – Vol. 14 No. 2 (November 1953)

Evaluation Date: April 7, 2026



Summary of Observations

This comic retains the front cover, back cover, inside front cover, inside rear cover, centerfold, and interior pages. Both original staples are present. The comic presents as **visually attractive overall**, with **strong retained cover gloss**, **good color saturation**, and **clean, readable interior pages**. The book remains complete and readable.

The most significant condition issues are concentrated at the **spine and staple areas**, where **visible spine edge damage** and **heavily rusted staples** are present. Oxidation is pronounced and has resulted in paper disruption adjacent to at least one staple location. Despite this, the book remains mechanically intact, with pages still attached.

Interior paper shows uniform aging and remains flexible per the brittleness test. Observed wear elsewhere consists primarily of edge abrasion, localized paper loss along the lower spine edge, and handling wear consistent with use but not abuse.

Front Cover — Observations

Photo Condition & Quality: (IMG_2766)

Observations:

The front cover displays **good overall retained gloss**, visible as reflective sheen across the green background when viewed under angled light. Color saturation remains strong and well preserved, particularly in the green background field and character colors. Printed linework remains sharp and clearly defined.

Edge wear is present along the bottom and open edges, consisting of light abrasion and minor paper thinning without large chips or tears. The top edge shows minor softening but retains a straight profile.

A **vertical stress line** is faintly visible near the spine, consistent with repeated opening and closing. At the lower spine area, paper disruption is visible where cover stock has thinned and broken away, exposing underlying paper layers. This damage does not extend into the central artwork but is clearly structural rather than superficial.

Corners exhibit rounding consistent with handling. No diagonal folds or large creases cross the primary artwork.

Overall Impression:

The front cover remains attractive and visually strong, but **structural wear along the spine edge is the dominant exterior defect.**

Back Cover — Observations

Photo Condition & Quality: (IMG_2767)

Observations:

The back cover retains full structural integrity with no missing sections. Surface toning is uniform and consistent with age. The printed Wheaties advertisement remains fully legible, with clear imagery and text.

Edge wear is present along the bottom and open edges, consisting of abrasion and softening. A **localized area of paper loss** is visible near the right edge, irregular in shape, extending inward several millimeters. Paper fibers at this location appear torn rather than rubbed, indicating material loss rather than erosion.

Corners show rounding and mild deformation, most pronounced at the lower right corner, where paper thinning is visible.

Overall Impression:

The back cover is intact but exhibits **localized material loss and typical handling wear**, with no impact to readability.

Inside Front Cover — Observations

Photo Condition & Quality: (IMG_2768)

Observations:

The inside front cover shows cream-to-tan paper coloration with moderate, even aging. No writing, stamps, or markings are visible. The hinge area shows mild stress creasing but remains intact. No reinforcement or repair materials are observed.

Overall Impression:

Inside front cover is clean and structurally stable, with age-appropriate toning.

Interior Pages — Observations

Photo Condition & Quality: (IMG_2769, IMG_2770, IMG_2771, IMG_2772)

Observations:

Interior pages remain clean and readable, with **even paper coloration** ranging from cream to light tan. Printed colors remain well defined, with strong contrast and intact halftone patterns. Black linework remains crisp across panels.

Minor handling wear is visible at outer page edges, including softening and shallow corner bending on several pages. No full-thickness tears, stains, ink transfer, or writing are visible. Page margins remain intact without chipping.

All photographed interior pages remain properly aligned and attached.

Overall Impression:

Interior pages present very well, with **light handling wear only and strong visual clarity**.

Inside Rear Cover — Observations

Photo Condition & Quality: (IMG_2768)

Observations:

The inside rear cover displays uniform toning consistent with the rest of the interior. Printed subscription material remains legible. Mild edge softening is present along the bottom edge. No writing or markings are visible.

Overall Impression:

Inside rear cover remains clean and intact.

Centerfold — Observations

Photo Condition & Quality: (IMG_2865)

Observations:

The centerfold remains fully attached at both staples. The fold line shows moderate compression consistent with use. No tearing or splitting is visible along the fold itself.

Staple perforations show stress and discoloration corresponding to staple oxidation, but paper remains continuous without complete pull-through.

Overall Impression:

Centerfold remains attached with **visible stress near staple points**, but no detachment.

Spine — Observations

Photo Condition & Quality: (IMG_2774)

Observations:

The spine exhibits **significant wear**, including abrasion, paper loss, and exposed underlying layers along the lower half. The green spine color is disrupted by multiple breaks where cover stock has flaked away. The spine remains generally straight but no longer presents a continuous, intact surface.

Structural damage appears progressive rather than catastrophic, suggesting long-term wear rather than a single failure event.

Overall Impression:

The spine shows **substantial material degradation**, representing one of the primary condition limitations.

Upper Staple — Observations

Photo Condition & Quality: (IMG_2776)

Observations:

The upper staple shows **heavy oxidation**, with dark brown corrosion covering much of the visible metal. Rust migration is visible into the surrounding paper, with discoloration extending several millimeters from the staple crown. Some fiber breakdown is visible at the penetration points.

Staple remains present and seated.

Overall Impression:

Upper staple is structurally present but **severely oxidized with adjacent paper disturbance**.

Lower Staple Area — Observations

Photo Condition & Quality: (IMG_2777)

Observations:

The lower staple area exhibits oxidation comparable to or exceeding that of the upper staple. Paper surrounding the staple shows darkened staining and local weakening. No complete pull-through is visible, but paper integrity at the staple legs appears compromised.

Overall Impression:

Lower staple area reflects **advanced corrosion and localized paper deterioration.**

Brittleness Test — Observations

Photo Condition & Quality: (IMG_2778)

Observations:

The tested page corner flexes without cracking, splitting, or flaking. The bend forms smoothly, and the paper partially rebounds toward flat upon release. No fiber fracture is visible.

Overall Impression:

Paper retains flexibility and does not exhibit brittle behavior at the tested point.

13/2

"SPARK UP- with WHEATIES!"

said POWER HITTER
GEORGE KELL
of the Boston Red Sox



I COULDN'T GET ANY REAL POWER BEHIND MY HITS UNTIL GEORGE KELL GAVE ME SOME GOOD TIPS ON HITTING AND CONDITION...



YOU'RE STANDING FLAT-FOOTED WHEN YOU SWING. TAKE A SHORT STEP LIKE THIS TO GET MORE POWER. TRY THIS...



BUILD UP YOUR ENERGY. SPARKIN' UP WITH WHEATIES HELPS ME. AND DON'T FORGET, PLENTY OF PRACTICE AND SLEEP.

I LIKE WHEATIES YOUR WAY, GEORGE - WITH PEACHES!



SOCKO! GEORGE WAS RIGHT ABOUT WHEATIES.

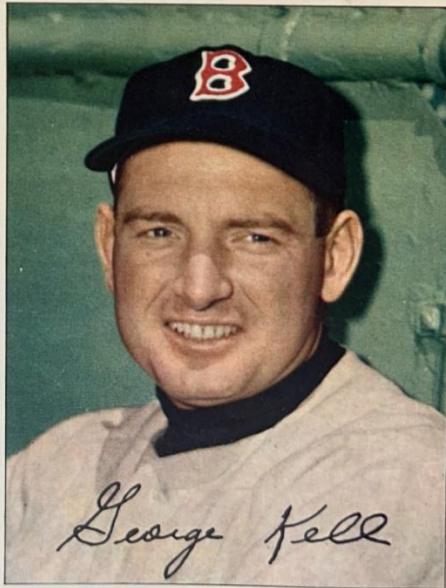
NOW YOU'RE SPARKIN' LIKE A CHAMPION.

SPARK UP WITH WHEATIES!

"Breakfast of Champions"

THERE'S A WHOLE KERNEL OF WHEAT IN EVERY WHEATIES FLAKE

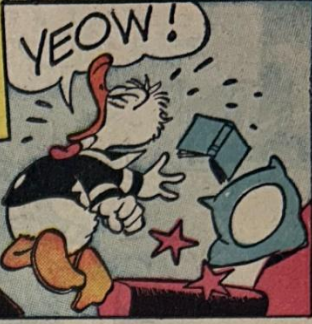
- ☀️ WHOLE WHEAT FOR GROWTH
- ☀️ WHOLE WHEAT FOR STAMINA
- ☀️ WHOLE WHEAT FOR RED BLOOD



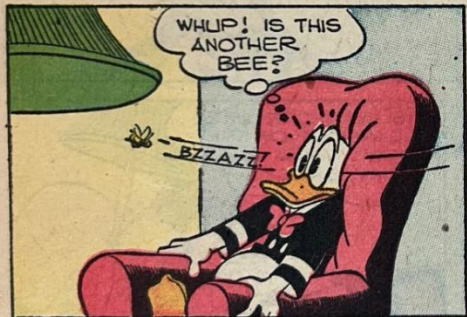
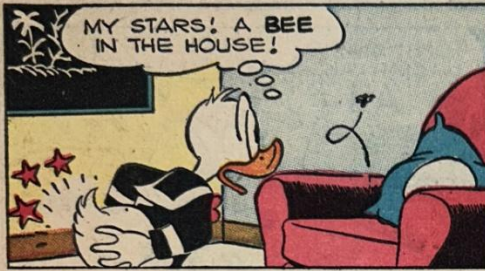
Cut this photo out. Look for different champion pictures in other Dell Comics.

WALT DISNEY
presents
Donald Duck

THE OPENING
SCENES OF
THIS DRAMA
TAKE PLACE
IN THE EARLY
SUMMER!



REG. U.S. PAT. OFF.
COPR., 1953, BY WALT DISNEY PRODUCTIONS
WORLD RIGHTS RESERVED



Walt Disney's Comics and Stories, Vol. 14, No. 2, November, 1953. Published monthly by arrangement with Walt Disney Productions. Subscription price in the U.S.A., \$1 per year, 10 cents per copy; foreign subscriptions, \$2 per year; Canadian subscriptions \$1.20 per year. Entered as second-class matter at the Post Office at Poughkeepsie, N. Y., under the act of March 3, 1879. All rights reserved by Walt Disney Productions throughout the world. K. K. Publications, Inc., assumes no responsibility for return of unsolicited manuscripts. Owners submitting manuscripts assume all risk for their loss or damage. Printed in U.S.A. by Western Printing & Lithographing Co. Entire contents copyright, 1950, 1953, by Walt Disney Productions. Published by

K. K. PUBLICATIONS, Inc., POUGHKEEPSIE, NEW YORK, U.S.A.

CHANGE OF ADDRESS requires four weeks. Old address, as well as new, must be given. A copy of your old address, as shown on the cover of the magazine, will speed delivery.

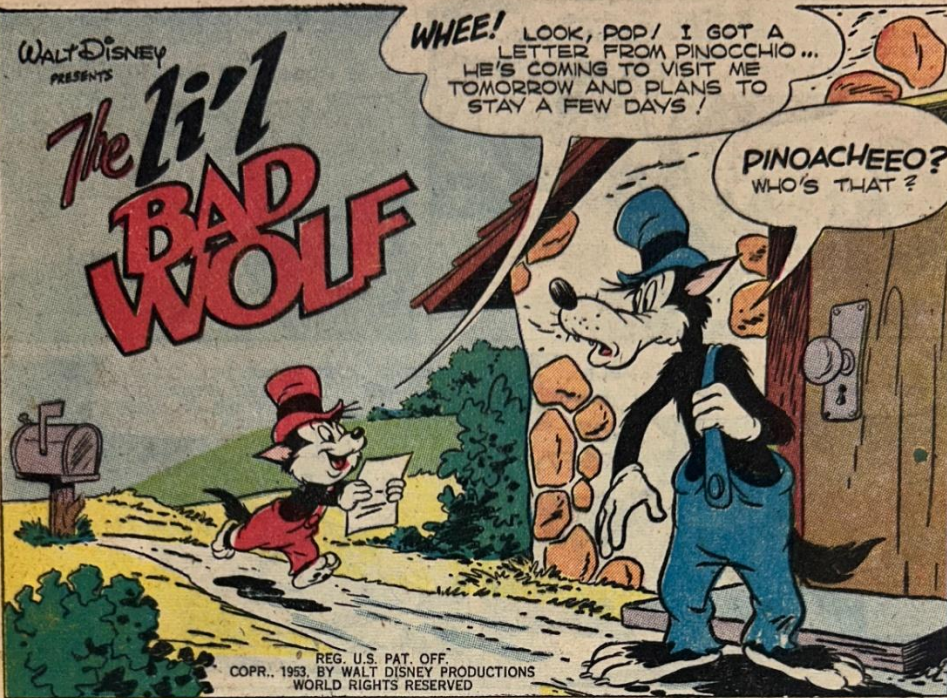
n-m-m!

WALT DISNEY
PRESENTS

The li'l BAD WOLF

WHEE! LOOK, POP! I GOT A LETTER FROM PINOCCHIO ... HE'S COMING TO VISIT ME TOMORROW AND PLANS TO STAY A FEW DAYS!

PINOACHEEO?
WHO'S THAT?



REG. U.S. PAT. OFF.
COPYR. 1953, BY WALT DISNEY PRODUCTIONS
WORLD RIGHTS RESERVED

ER... IS HE RELATED TO THE THREE LI'L PIGS SMACK! BY ANY CHANCE?

NO!
HE'S A
BOY!



I THOUGHT I HAD TOLD YOU ABOUT HIM! HE'S THE ONE WITH THE PECULIAR NOSE!

HUH?
WHAT ABOUT IT?



WHEN HE TELLS A FIB, IT STARTS GROWING ... AND THE BIGGER THE FIB, THE LONGER IT GROWS!

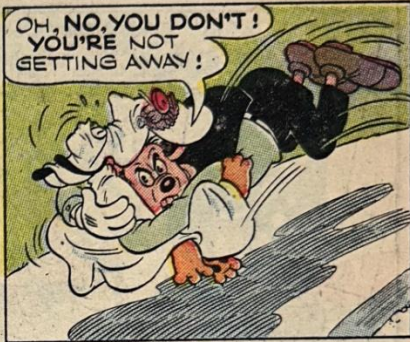
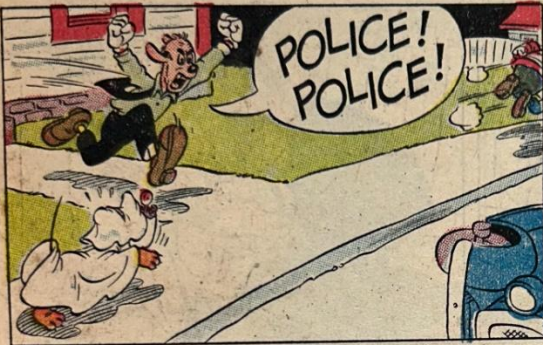
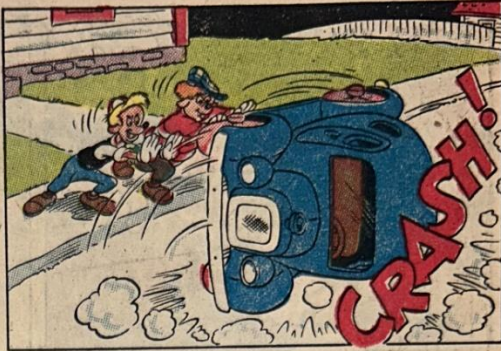
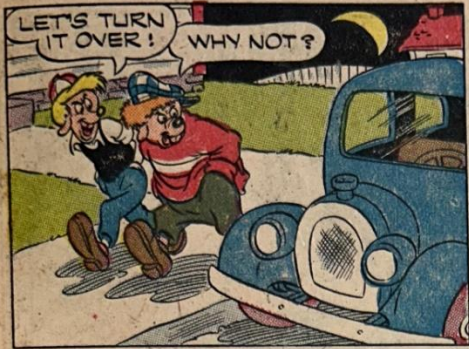
REALLY?



TEE, HEE! IT LOOKS LIKE YOU'VE TOLD A FEW WHOPPERS IN YOUR DAY, POP!

THAT'LL DO, LI'L WOLF!





HERE!
YOU A
WATER.

ARF!

LOWEEN,
WHO TRY TO
SPOIL
EVERY
ONE
ELSE'S
FUN!
LIKE
THESE
TWO...

MICKEY MOUSE

by WALT DISNEY

WHAT A DAY'S HUNTING! THINK I'LL GO HOME AND OPEN A CAN OF BEANS!

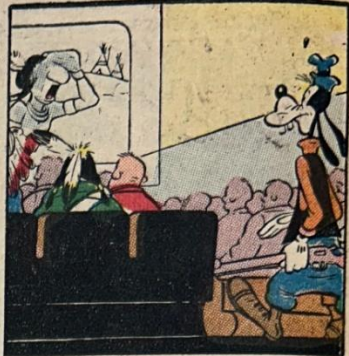
YOU GO AHEAD, MICKEY! HERE'S A COUPLE OF MOVIES I BEEN WANTIN' TO KETCH!

DOUBLE FEATU

CALPINE TIME

The HOODLUM

TODAY



OH, BOY! INDIANS! I LOVE 'EM... BUT THEY MAKE ME NERVOUS!

GULP!



GULP!

THE END

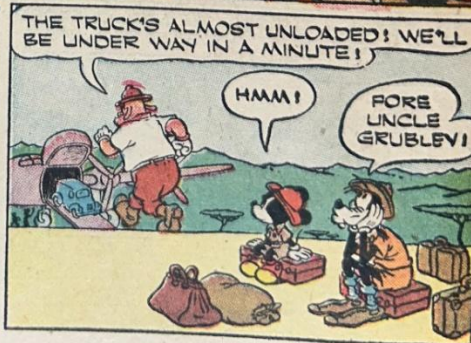
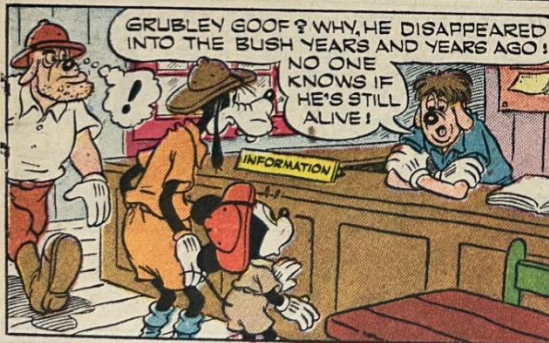
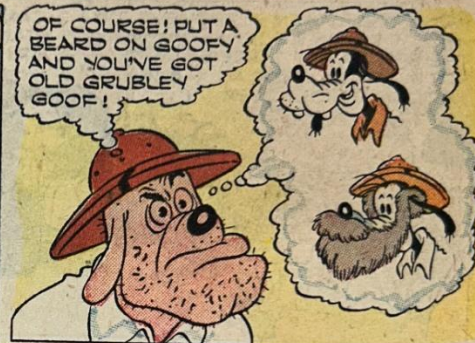


HALP!

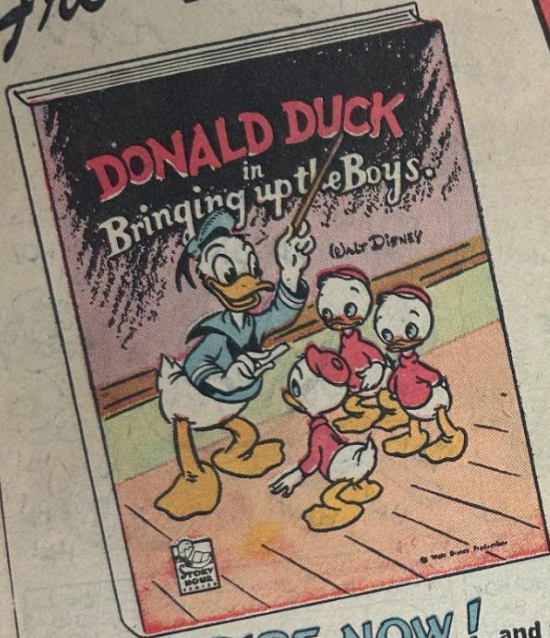
HALP!

WALT DISNEY

DISTRIBUTED BY KING FEATURES SYNDICATE



Free DONALD DUCK BOOK



WITH EACH
SUBSCRIPTION
TO

**WALT
DISNEY'S
COMICS
AND
STORIES**

SUBSCRIBE NOW! and receive FREE this beautifully lithographed 36 page book in full color. Size 4 3/4" x 6 1/2".

Walt Disney's Comics and Stories is the only magazine of authentic Disney characters. It contains clean, wholesome humor, the best in art work, coloring and readability. Approved by parents and teachers everywhere. Suitable for everyone, from ages 3 to 90.

Mail to: K. K. PUBLICATIONS, Inc. Dept. 11 Poughkeepsie, N. Y.

Enclosed please find \$ _____ for which please send a _____ year subscription to **WALT DISNEY'S COMICS AND STORIES** and the Free Donald Duck Book to:

PLEASE PRINT
Name _____

Street and Number _____ Mailing Dist. No. _____ State _____

City or Town _____

Donor's Name _____

Street and Number _____ Mailing Dist. No. _____ State _____

City or Town _____

SUBSCRIPTION RATES
5 years—\$4.00 3 years—\$2.50 2 years—\$1.75 1 year—\$1.00



© 1954 WALT DISNEY PRODUCTIONS
ALL RIGHTS RESERVED

FOR HEAVEN'S TURN

OKAY, OKAY, I'LL... ?!



© 1954 WALT DISNEY PRODUCTIONS
ALL RIGHTS RESERVED

ACME CLEANERS





